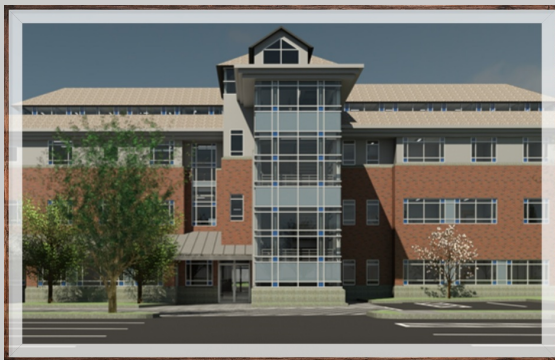


[Descargue el mensaje en Español aquí](#)

[Descarregue esta mensagem em Português aqui](#)

EXPRESS HEALTH CARE EXPANDS TO PAWTUCKET

Your choice - Your care - two convenient options



1000 Broad Street, Central Falls*

Monday - Friday 8:00am-5:00pm

Saturdays 8:00am-4:30pm

**NO APPOINTMENT REQUIRED,
JUST WALK IN!**

*Open evenings & minor holidays



39 East Avenue, Pawtucket

Monday - Friday 8:00am-5:00pm

APPOINTMENT REQUIRED!

(401) 722-0081

VISIT US BEFORE YOU GO TO THE EMERGENCY ROOM

Our Services (Same day sick visits)

- Sprains & strains
- Rash or non-emergency allergic reactions
- Fevers or flu symptoms
- Nausea, vomiting, diarrhea
- Cuts & Scrapes
- Urinary tract infections
- Sexual transmitted infections (testing & treatment)
- Earaches & more!

MEET A FEW OF OUR TEAM MEMBERS



Pictured from left to right (Dr. Cesar Mora Jaramillo, Adriana Reyna, PA, Gisela Olivia Gomes, MA, Leonardo Cioe, RN, Olivia Gomes, MA, and Hali Ramos, MA)



Express Health Care Central Falls expands hours

Starting January 13th

Mondays & Tuesdays until 8pm



Blackstone Valley Community Health Care celebrating 30 years of offering the highest quality, lowest cost health care. Thank you for trusting us with your care.



Share This Email



Blackstone Valley Community Health Care | 39 East Avenue | Pawtucket, RI 02860 US

[Unsubscribe](#) | [Constant Contact Data Notice](#)



Try email marketing for free today!