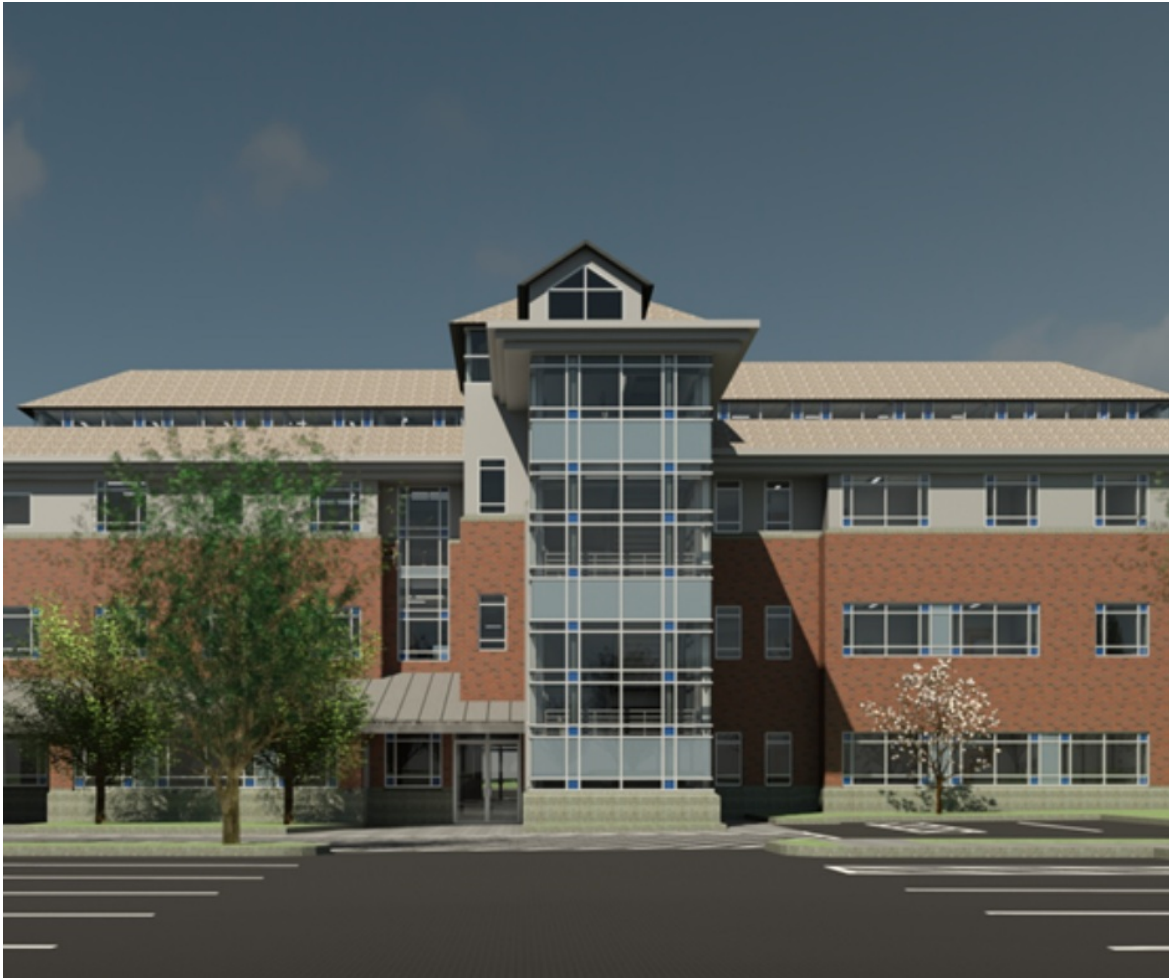


[Descargue el mensaje en Español aquí](#)

[Descarregue esta mensagem em Português aqui](#)

## EXPRESS HEALTH CARE EXTENDED HOURS



**1000 Broad Street, Central Falls\***

**Monday & Tuesday 8:00am-8:00pm**

Wednesday through - Friday 8:00am-5:00pm

Saturdays 8:00am-4:30pm

**NO APPOINTMENT REQUIRED, JUST WALK IN!**

\*Open evenings & minor holidays

**401-722-0081**

---

**VISIT US BEFORE YOU GO TO THE EMERGENCY ROOM**

**Our Services**

## (Same day sick visits)

- Sprains & strains
- Rash or non-emergency allergic reactions
- Fevers or flu symptoms
- Nausea, vomiting, diarrhea
- Cuts & Scrapes
- Urinary tract infections
- Sexual transmitted infections (testing & treatment)
- Earaches & more!



*Blackstone Valley Community Health Care celebrating 30 years of offering the highest quality, lowest cost health care. Thank you for trusting us with your care.*



Share This Email

Blackstone Valley Community Health Care |  
[Website](#)



Blackstone Valley Community Health Care | 39 East Avenue | Pawtucket, RI 02860 US

[Unsubscribe](#) | [Constant Contact Data Notice](#)



Try email marketing for free today!